

TIMBERWALK SECTION TWO

PREPARED BY
KEITH AND SCHNARS, P.A.
 ENGINEERS, PLANNERS, SURVEYORS
 118 N.E. 4TH AVENUE
 FORT LAUDERDALE, FLORIDA
 THOMAS P. SCHNARS, P.L.B. #2925

A PORTION OF LOGGERS RUN A.P.D.
 BEING A RESUBDIVISION OF A PORTION OF TRACT 6
 BOUNDARY PLAT OF ORIOLE COUNTRY (P.B. 32, PGS 175-180)
 SECTION 26, TOWNSHIP 47 SOUTH, RANGE 41 EAST
 PALM BEACH COUNTY, FLORIDA



59

STATE OF FLORIDA
 COUNTY OF PALM BEACH

THIS PLAT WAS FILED FOR
 RECORD AT THE
 DAY OF
 1979, AND DULY RECORDED
 IN PLAT BOOK ON
 PAGES

JOHN B. DUNKLE
 CLERK OF CIRCUIT COURT

SURVEY NOTES:

1. \square PRM INDICATES PERMANENT REFERENCE MONUMENT
2. \square PCP INDICATES PERMANENT CONTROL POINT
3. SURVEY DATA IN FIELD BOOK 111 PAGE 38-40
4. BEARINGS SHOWN HEREON ARE RELATIVE TO ASSUMED DATUM ON BOUNDARY PLAT OF ORIOLE COUNTRY, P.B. 32, PGS 175-180.
5. \odot INDICATES CURVE NUMBER
6. \square INDICATES UNIT LETTER
7. \square INDICATES CLUSTER NUMBER
8. --- INDICATES CENTERLINE OF 12' WIDE DRAINAGE EASEMENT
9. --- INDICATES CENTERLINE OF 12' WIDE WATER EASEMENT
10. D.E. INDICATES DRAINAGE EASEMENT

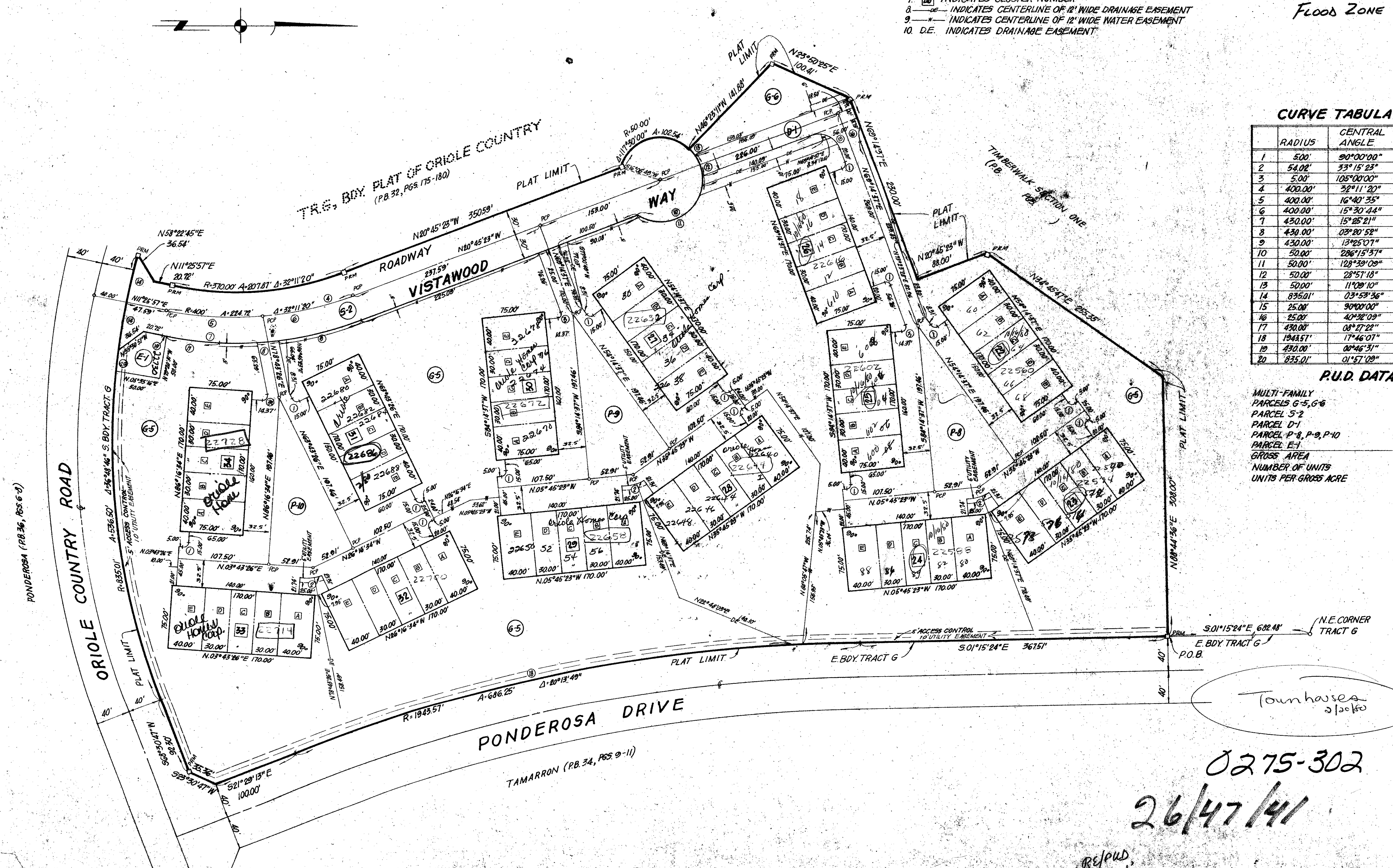
FLOOD ZONE AO
 (1')

CURVE TABULATION

	RADIUS	CENTRAL ANGLE	ARC	TANGENT
1	500'	90°00'00"	7.854'	5.000'
2	54.02'	33°15'23"	31.355'	16.133'
3	5.00'	105°00'00"	0.163'	6.516'
4	400.00'	32°11'20"	224.780'	115.412'
5	400.00'	16°40'35"	116.423'	58.626'
6	400.00'	15°30'44"	108.297'	54.482'
7	430.00'	15°25'21"	115.744'	58.224'
8	430.00'	03°20'52"	25.124'	12.568'
9	430.00'	13°25'07"	100.706'	50.584'
10	50.00'	286°15'37"	249.809'	
11	50.00'	128°39'09"	112.271'	104.015'
12	50.00'	28°57'18"	25.268'	12.910'
13	50.00'	11°00'10"	9.733'	4.882'
14	835.01'	03°53'36"	56.741'	28.301'
15	25.00'	90°00'00"	35.355'	25.000'
16	25.00'	40°32'09"	17.687'	9.332'
17	430.00'	08°27'22"	63.462'	31.789'
18	1943.51'	17°46'07"	602.141'	303.810'
19	430.00'	00°46'31"	5.818'	2.909'
20	835.01'	01°57'09"	28.455'	14.229'

P.U.D. DATA

MULTI-FAMILY PARCELS G-5, G-6	3.805 ACRES
PARCEL S-2	7.000 ACRES
PARCEL D-1	1.045 ACRES
PARCEL P-8, P-9, P-10	0.112 ACRES
PARCEL E-1	2.823 ACRES
GROSS AREA	15.247 ACRES
NUMBER OF UNITS	65
UNITS PER GROSS ACRE	4.26



Townhouses
 2/10/80

0275-302
 26/47/41
 38/59

TIMBERWALK SEC II

RE/PWD
 P.C. 1
 NO. 11/3